



LOCKS

NEW SPRING 2009



NEW YORK LEGEND CHAIN & NEW YORK PADLOCK

- 15mm round chain links made of 3t hardened steel
- Reinforced, shrouded shell & shackle for ultimate security
- 16mm hardened MAX-performance steel shackle
- New York padlock with high security disc-style cylinder
- Includes 3 new "1" keys for better ergonomics
- \$2,000 anti-theft offer



60" CHAIN & LOCK LK001335

NEW YORK FAHGETTABOUDIT® CHAIN AND LOCK ④

IMPROVED SPRING 2009

- 14mm 6-sided triple heat treated, Boron Manganese steel links withstand boltcutters, saws, hammers, chisels and files
- Includes NY Disc Lock®
- \$1,250 anti-theft offer
- Durable, protective nylon cover



39" CHAIN & LOCK LK001332
60" CHAIN & LOCK LK001331

NEW YORK NOOSE™ & EVOLUTION SERIES 4 LOCK ④

IMPROVED SPRING 2009

- Same as N.Y. Chain, but with end loop
- Cinch design uses less length & weight
- Includes third lighted key
- \$1000 anti-theft offer
- Durable, protective nylon cover

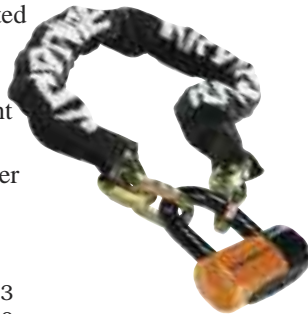


28" NOOSE & LOCK LK001123
51" NOOSE & LOCK LK001125

NEW YORK CHAIN® & EVOLUTION SERIES 4 LOCK ④

IMPROVED SPRING 2009

- 12mm 6-sided triple heat treated Boron Manganese steel chain gives superior strength
- Trapezoidal link extra-resistant to cutting
- Durable, protective nylon cover
- Includes third lighted key
- \$1000 anti-theft offer



39" CHAIN & LOCK LK001083
66" CHAIN & LOCK LK001086

NEW YORK LOCK® MC ④

- 4" x 10.25"
- 16mm hardened steel shackle
- Hardened steel sleeve over crossbar for double security
- Center keyway defends against leverage attacks
- \$1,000 anti-theft offer
- Vinyl coating prevents scratches
- Third lighted key included



LK001008

INTEGRATED CHAIN & LOCK ④

- 3 Point locking head for added security
- 5 pin brass cylinder
- Durable protective cover
- Replacement key program available
- 9.5mm 4 sided heat treated chain



51" LK001015

KRYPTOLOK® ④

- 13mm hardened steel shackle
- 4" x 11.5" keyed lock or 4" x 8" combination lock (not shown)
- Vinyl coating prevents scratches
- Optional \$500 anti-theft protection offer (keyed version only)
- Great value



KEYED LK001001
COMBINATION LK001003



④ KEY REPLACEMENT - 1ST 2 KEYS FREE

LOCKS



KRYPTO DFS 10 DISC LOCK^④

- New dual reinforced disc style cylinder
- Includes carrying pouch
- 10mm pin diameter

CHROME LK001048
 ORANGE LK001045
 YELLOW LK001046
 WITHOUT POUCH
 ORANGE LK999999
 (ECONOMICALLY PRICED)



KEEPER 5-S DISC LOCK^④

- 5mm pin fits smaller openings
- New dual reinforced disc style cylinder
- Includes carrying pouch
- Compact & weatherproof

CHROME LK001090
 YELLOW LK001095



NEW YORK DISC LOCK^{®④}

- 14mm hardened steel shackle
- 2.3" x 2.2" disc opening
- Hardened steel sleeve over crossbar for double security
- Center keyway defends against leverage attacks
- \$750 anti-theft offer
- Carrying pouch & disc lock reminder included
- Third lighted key included

BLACK/YELLOW LK001082



NEW YORK FAHGETTABOUDIT[®] LOCK^④

- 18mm hardened steel shackle
- 3.25" x 6" opening
- High security disc style cylinder
- Kryptonite ultimate security offering
- Third lighted key included
- \$4,500 anti-theft offer

BLACK/YELLOW LK001007



EVOLUTION[™] SERIES 4 DISC LOCK^④

- Increased inner shackle dimensions to fit more rotor sizes (Width 48mm; height 54mm)
- 14mm hardened steel shackle
- New high security disc cylinder with dust cover & reinforced cuff over crossbar
- \$750 anti-theft offer
- 3 keys included; one with high-intensity light

BLACK LK001051
 ORANGE LK001059
 RED LK001052
 YELLOW LK001055



EVOLUTION[™] SERIES 4 DISC LOCK PREMIUM PACK^④

- Carrying pouch & disc lock reminder included

PREMIUM PACK (YELLOW ONLY) LK001065



KRYPTOLOK SERIES 2 DISC LOCK

- 13mm hardened steel shackle
- Reinforced steel shield over crossbar & cylinder for added protection
- Rotating dust cover protects cylinder
- \$500 anti-theft offer
- Economically priced
- 2 keys included

BLACK/YELLOW LK001067



DISC LOCK REMINDER CABLE

- Bright orange cable
- Loops from handlebar to lock
- Reminds rider to unlock and remove disc lock before riding away

LK001070



- EXHAUST
- FUEL/AIR
- ELECTRIC
- TOOLS
- SECURITY
- LUGGAGE
- H₂O
- ACCESS
- APPAREL
- CONTROL
- CHEMICAL
- CLUTCH
- PISTONS
- ENGINE
- BODY
- WHEELS
- BRAKES
- DRIVE



^④ KEY REPLACEMENT - 1ST 2 KEYS FREE



LOCKS

- EXHAUST
- FUEL/AIR
- ELECTRIC
- TOOLS
- SECURITY
- LUGGAGE
- H₂O
- ACCESS
- APPAREL
- CONTROL
- CHEMICAL
- CLUTCH
- PISTONS
- ENGINE
- BODY
- WHEELS
- BRAKES
- DRIVE

HARD WIRE® INTEGRATED CABLE & LOCK

15MM, 20 & 25MM^④

- Advanced high security disc style cylinder
- Reinforced locking head
- Cylinder cover protects against dirt



15MM	6' X 15MM	LK001009
20MM	42" X 20MM	LK001032
20MM	6' X 20MM	LK001031
20MM	8' X 20MM	LK001034
25MM	66" X 25MM	LK001033

INTEGRATED 25MM CABLE & LOCK^④

- Rotating lock head for easy lock-up
- 5-pin brass cylinder
- 3-point locking head for added security



4' ARMORED CABLE	LK001029
5' ARMORED CABLE	LK001027
5' BRAIDED CABLE	LK001025

KRYPTO FLEX INTEGRATED FLEXIBLE CABLE & LOCK

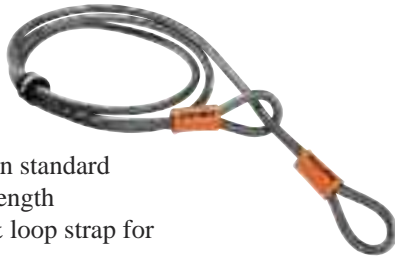
- Self coiling, flexible, braided steel cables
- Vinyl coating prevents scratching
- Great for accessory lockups



815 KEY	5' X	
8MM	LK001111	
1018 KEY	6' X 10MM	LK001130
1018 COMBINATION	6' X 10MM	LK001130C
1218 KEY	6' X 12MM	LK001135

KRYPTOFLEX® STEELCABLES

- Braided cable provides greater core density than standard cables giving added strength
- 4' & 7' includes hook & loop strap for easy coiling & carrying



4' X 10MM	LK001200
7' X 10MM	LK001210
30' X 10MM	LK001230

KRYPTOFLEX FLEXIBLE CABLE & PADDLOCK



818 KEY	6' X 8MM	LK001300
---------	----------	----------

STAINLESS STEEL 70MM PADLOCK

- Armor protected shackle
- Stainless steel welded body
- Deadbolt locking
- Brass cylinder & pins



LK001199

SECURITY ANCHORS

- 16mm hardened carbon alloy steel shackle equal in strength to Kryptonite's New York series level of security
- Attaches to ground, wall, truck, or trailer bed
- Drill bits included



LK001088



^④ KEY REPLACEMENT - 1ST 2 KEYS FREE

TIE DOWNS



ANCRA TRACKSTAR WHEEL CHOCK

- Designed to fit front tires 3.5" to 5.5" wide
- Designed to fit standard truck beds and flat floor trailers
- Wheel chock is detachable



COMPLETE KIT TD002012
EXTRA TRACK TD002013 (8" LONG)

ANCRA SOFT HOOK EXTENSIONS

- Eliminates metal-to-metal contact
- Protects paint & chrome
- Doubles as tiedown extension



12" BLACK TD002008
18" BLACK TD002009
18" GREEN TD002016
18" ORANGE TD002015

ANCRA 3' WHEEL TIES

- Keeps rear wheels in trailer channels

TD002010



CANYON DANCER BAR-HARNESS II



- Improvement over the the regular bar harness
- A glass filled injection molded polycarbonate "cup" with steel lay-in replaces the old handlebar cuff
- Cross straps are held farther away from the switchgear
- Cups eliminate possible damage to soft grips
- New clam shell packaging
- Black color only

HANDLEBARS UP TO 32" WIDE TD003004
HANDLEBARS UP TO 34" WIDE TD003005
HANDLEBARS UP TO 40" WIDE TD003006



ANCRA "THE ORIGINALS"

- 5 1/2' long
- 1200 lb assembly strength
- 4500 lb tensile strength nylon webbing
- Cam-lever locking buckle
- 2 vinyl-covered hooks
- Sold in pairs
- Red snapper spring-loaded hook replaces adjustable end hook

	ORIGINAL	ORIGINAL W/SOFT HOOK	RATCHET W/SOFT HOOK
BLACK	TD002002	TD002102	TD002202
BLUE	TD002003	TD002103	TD002203
GREEN	TD002905		
ORANGE	TD002907		
RED	TD002001	TD002101	TD002201
RED SNAPPER	TD002005		

ANCRA BOLT-ON FIT KITS

- Tiedown fitting in floor-mounted anchor plate
- Strong and secure, without protruding hardware
- Kit includes removable fitting, base plate & hardware

TD002011



CANYON DANCER HANDLEBAR HARNESS

- Virtually eliminates damage to bodywork from tiedowns
- Slips onto grips and the tiedowns hook into the end loops
- Fits a wide variety of bikes



BLACK/BLACK TD003002
BLUE/BLACK TD003003
RED/BLACK TD003001

EXHAUST
FUEL/AIR
ELECTRIC
TOOLS
SECURITY
LUGGAGE
H₂O
ACCESS
APPAREL
CONTROL
CHEMICAL
CLUTCH
PISTONS
ENGINE
BODY
WHEELS
BRAKES
DRIVE



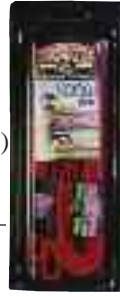
TIE DOWNS

- EXHAUST
- FUEL/AIR
- ELECTRIC
- TOOLS
- SECURITY
- LUGGAGE
- H₂O
- ACCESS
- APPAREL
- CONTROL
- CHEMICAL
- CLUTCH
- PISTONS
- ENGINE
- BODY
- WHEELS
- BRAKES
- DRIVE

POWERTYE 1" SOFT-TYES

- Use as tie down extension
- 12" or 18" lengths
- Available with sheepskin sleeve to reduce scratching (18" long only and 1" or 1 1/2" wide only)

	12"	18"	18" W/ SHEEPSKIN SLEEVE
BLACK	TD006402	TD006302	1" WIDE TD006504
NAVY BLUE		TD006306	
RED	TD006401	TD006301	1 1/2" WIDE TD006505
ROYAL BLUE	TD006403	TD006303	



POWERTYE WITH SOFT-TYE & SECURE HOOK



- Sewn in soft-tye
- 4,500lb test nylon, double stitched
- Industrial grade buckle (600lb workload per strap)
- Secure hook, secures strap at anchor point

BLACK	TD006801
BLUE	TD006803
CHROME	TD006804
RED	TD006802
3' PWC STRAP	TD006999



POWERTYE 1" TIEDOWNS

- 4,500 lb test nylon webbing on standard models
- 1,200 lb assembly strength on standard models
- 3/8" vinyl coated hooks
- Industrial grade cambuckles on standard models
- Soft-Tye sewn in on Soft-Tye model
- Zinc plated industrial grade ratchet on ratchet models
- 2" wide ratchet on ratchet models
- 7400 lb test nylon on ratchet models
- Snap-hook secure end on ratchet models
- Double security stitching on ratchet models
- 2600 lb rated assembly on ratchet models
- 6.5 ft. length on ratchet models
- **Custom screening available - call for details**

	STANDARD	W/SOFT-TYE	RATCHET
BLACK	TD006002	TD006102	TD006202
CHROME		TD006104	
NAVY BLUE		TD006106	
RED	TD006001	TD006101	TD006201
ROYAL BLUE	TD006003	TD006103	
ORANGE	TD006005	TD006105	

POWERTYE 1 1/2" TIEDOWNS WITH SOFT TYE

- Soft-tye sewn in won't scratch
- Quik safe hooks with unique self closing design
- 6,000lb test nylon
- 600lb workload per strap

BLACK/BLACK	TD006702
BLACK/ORANGE	TD006715
BLUE/BLACK	TD006703
ORANGE/BLACK	TD006705
RED/BLACK	TD006701



SOUTHERN TIEDOWNS

- High quality, economically priced
- 1", 2700 lb test nylon webbing
- Vinyl coated hook
- Available in standard or ratchet styles

	STANDARD	RATCHET
BLACK	TD001002	TD001012
BLUE	TD001003	TD001013
GREEN	TD001005	
ORANGE	TD001006	
RED	TD001001	TD001011



UTILITY COOLER STRAP 48"

- Strap with a buckle on it that can be quickly loosened to allow access to the cooler without being removed
- Custom screening available - call for details
- Minimum of 100 mixed straps required for custom screening

BLACK	TD007001
BLUE	TD007003
RED	TD007002



LOCKS



NEW

MAX40 DISK U-LOCK

- Lifetime warranty
- 1/2" hardened chrome plated steel shackle
- Durable PVC sleeve covers chrome steel shackle to prevent marring and scratching
- Hardened solid steel lock prevents prying, sawing and hammer impacts
- Tough polymer outer skin absorbs hammer strikes and reduces marring and scratching
- Lock core design provides the highest degree of protection against picking
- Includes 2 keys



BLACK
YELLOW

LK101001
LK101002

MAX90 U-LOCK

- Lifetime warranty
- Oversized 16mm hardened steel shackle
- Dual cross bolt lock mechanism withstands in excess of 6.5 tons of pull force
- Shackle can withstand over 8,000 pounds of expansion force
- 4 1/8" distance between bars, 10 1/2" from lock casing to top of U (interior dimensions)
- Lock core design provides the highest degree of protection against picking
- Key hole cover slides to keep out dirt and grime
- Includes 3 keys, one is equipped with a mini flash light



LK101005

MAX60 DISK U-LOCK

- Lifetime warranty
- 9/16" hardened chrome plated steel shackle
- Durable PVC sleeve covers chrome steel shackle to prevent marring and scratching
- Hardened solid steel lock prevents prying, sawing and hammer impacts
- Tough polymer outer skin absorbs hammer strikes and reduces marring and scratching
- Lock core design provides the highest degree of protection against picking
- Includes 3 keys, one is equipped with a mini flash light



LK101003

MAX80 U-LOCK

- Lifetime warranty
- Oversized 12mm hardened steel shackle
- 4 1/8" distance between bars, 12" from lock casing to top of U (interior dimensions)
- Features an exclusive dual shear plate locking mechanism
- Lock core design provides the highest degree of protection against picking
- Key hole cover slides to keep out dirt and grime
- Includes 3 keys, one is equipped with a mini flash light



LK101004

T-HEX SUPER CHAIN LOCK SETS

- Lifetime warranty
- Large hexagon shaped 10mm links
- Durable Nylomex sleeve protects against scratches
- Withstands over 6 tons of pull force and 11 tons of cutting force
- Best when used with a U-lock or ultra strength padlock

3.25' X 10MM CHAIN ONLY LK101030
5' X 10MM CHAIN ONLY LK101033

CHAIN AND LOCK COMBINATION SETS

3.25' CHAIN & MAX40 LOCK LK101031(1)
3.25' CHAIN & MAX60 LOCK LK101032
5' CHAIN & MAX40 LOCK LK101034(1)
5' CHAIN & MAX60 LOCK LK101035
3' CHAIN & INTEGRATED LOCK LK101036
(1) NO CHOICE OF LOCK COLOR



- EXHAUST
- FUEL/AIR
- ELECTRIC
- TOOLS
- SECURITY
- LUGGAGE
- H₂O
- ACCESS
- APPAREL
- CONTROL
- CHEMICAL
- CLUTCH
- PISTONS
- ENGINE
- BODY
- WHEELS
- BRAKES
- DRIVE



LOCKS

IRONCLAD ARMOR PLATED LOCKING CABLES



- Lifetime warranty
- High security, stainless steel locking cable
- Durable PVC skin prevents scratching
- Ballistic grade polymer lock housing cover resists hammer strikes and protects lock mechanism
- Patented key cover resists grime and moisture

3' X 22MM	LK101027
4' X 26MM	LK101028
6' X 26MM	LK101029

ROTOR DISK LOCKS

- Lifetime warranty
- Includes a free carry pouch and a free disc lock reminder cable
- Includes an extra mini flashlight key for 3 total keys
- Durable push button lock
- Includes 3 keys, one is equipped with a mini flash light

DESCRIPTION	COLOR	PART#
5.5MM PIN (SHORT THROAT)	YELLOW	LK101017
10MM PIN (LONG THROAT)	CHROME	LK101018
10MM PIN (LONG THROAT)	YELLOW	LK101019
REPLACEMENT SAFETY REMINDER CABLE		LK101043



MULTI-USE VERSA-CABLE WITH LOCK

- Lifetime warranty
- Lock can be moved (by sliding on cable) to any length needed
- PVC protective coating to prevent surface scratching
- Comes with a 6' x 10mm diameter cable
- Need a longer cable- chose from two replacement lengths



DESCRIPTION	PART#
6' CABLE WITH LOCK	LK101048
12' REPLACEMENT CABLE ONLY	LK101046
30' REPLACEMENT CABLE ONLY	LK101047

UNIVERSAL UNATTENDED TRAILER COUPLER LOCK

- Lifetime warranty
- Huge 6 tooth, 3/8" dual ratchet locking system
- Hardened 5/8" 16mm steel shackle
- One size fits all from 1 7/8", 2", to 2 5/16", (all coupler types)
- Key hole cover slides up to seal out dirt and grime



QUICK RELEASE CABLE LOCK

- Lifetime warranty
- High security 6' long x 12mm locking cable
- Durable PVC protective coating prevents scratching



LK101016

LK101045

TRIMAFLEX DUAL LOOP CABLES

- Lifetime warranty
- Heavy duty flexible steel cable
- Add a U-lock for the ultimate in multi-use security

8' X 15MM	LK101025
12' X 12MM	LK101022
15' X 10MM	LK101023
30' X 10MM	LK101024



TRIMAFLEX CABLE U-LOCK

- Lifetime warranty
- 6 feet long x 15mm diameter, Trimaflex flexible steel cable with integrated disc U-lock

LK101021



LOCKS



COMBINATION PADLOCKS

- Paddlocks have 2" bodies with a resettable combination lock, solid brass construction, choose from two different shackle heights

DESCRIPTION	PART#
1 1/4" H X 8MM SHACKLE	LK101041
2 1/4" H X 8MM SHACKLE	LK101042



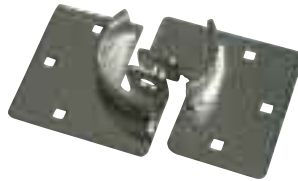
TRAILER DOOR LOCKS

- Designed and manufactured from one solid piece of metal
- Resistant to all weather
- No springs to rust or jam
- No outside shackle to cut or saw
- 5 pin solid brass cylinder
- Three keys provided
- Hasp trailer door lock mounting bracket is triple chrome plated



TRAILER DOOR LOCK	LK101037
TRAILER DOOR LOCK (KEYED ALIKE)	LK101038

DOOR LOCK MOUNTING BRACKET	LK101039
----------------------------	----------



ADJUSTABLE WHEEL LOCK

- Fits nearly all 10" to 18" wheel diameters
- For use on trailers, construction equipment, cars, trucks, ATV's etc...
- Heavy gauge steel disc covers lug nuts to prevent wheel removal
- Clamps tight to wheel for added security
- Epoxy powder coat finish prevents rust

LK101044



WALL/FLOOR ANCHOR

- For use with any Trimax cable, chain and lock
- Comes with lag bolts and wedge anchors

LK101026



TRAILER HITCH RECEIVER PINS

Features for locking pins:

- Lifetime warranty
- Triple plated chrome finish
- O-ring keeps water, grime and dirt out of locking mechanism to ensure years of use
- No internal springs to seize up or break
- Includes 2 keys



Features for non-locking pins:

- Lifetime warranty
- Stainless steel construction
- Standard bent pin style design



DESCRIPTION	PART#
1/2" LOCKING (CLASS I & II HITCHES)	LK101013
5/8" LOCKING (CLASS III, IV, V HITCHES)	LK101015
1/2" NON-LOCKING (CLASS I & II HITCHES)	LK101012
5/8" NON-LOCKING (CLASS III, IV, V HITCHES)	LK101014

RECEIVER & COUPLER LOCK SETS

- Lifetime warranty
- Receiver & coupler keyed alike
- Stainless steel construction

DESCRIPTION	PART#
5/8" RECEIVER - 9/16" SPAN COUPLER	LK101009
5/8" RECEIVER - 2 1/2" SPAN COUPLER	LK101010
5/8" RECEIVER - 3 1/2" SPAN COUPLER	LK101011



COUPLER LEVER LOCKS

- Lifetime warranty
- Stainless steel outer and internal construction
- Patented dual lock lug design
- Full length pin made of solid forged machined steel that cannot be pulled out
- No internal springs to seize up or brake
- 3/4" coupler lock can also be used as a door lock



DESCRIPTION	PART#
FITS 3/4" COUPLER OR DOOR LOCK	LK101040
FITS UP TO 7/8" COUPLER SPAN	LK101006
FITS UP TO 2 1/2" COUPLER SPAN	LK101007
FITS UP TO 3 1/2" COUPLER SPAN	LK101008

EXHAUST
FUEL/AIR
ELECTRIC
TOOLS
SECURITY
LUGGAGE
H₂O
ACCESS
APPAREL
CONTROL
CHEMICAL
CLUTCH
PISTONS
ENGINE
BODY
WHEELS
BRAKES
DRIVE